

Case Study

Fortifying Cyber Resilience for a Leading Telecommunications Provider in North Africa

Navigating the Cyber Threat Landscape



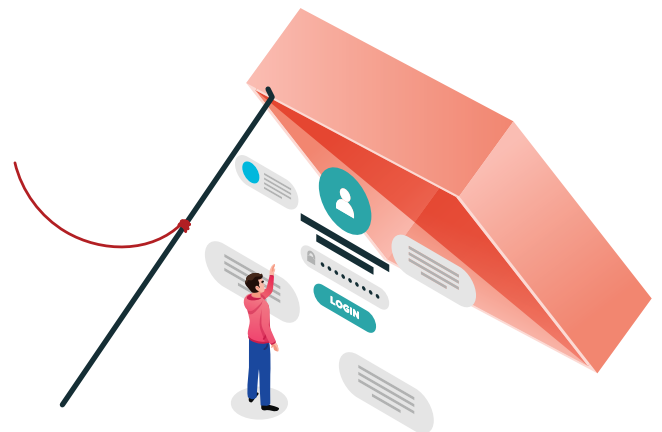
In the dynamic realm of cybersecurity, the telecommunications sector stands as a prime target for cyber threats. The evolving digital landscape requires a comprehensive approach to mitigate risks, especially with the surge in sophisticated phishing attacks. A major telecommunications provider in North Africa recognized the importance of fortifying their defenses against these evolving threats.

Challenges

The telecommunications provider identified critical gaps in their cybersecurity strategy, notably the absence of a Compliance Manager and the reliance on rudimentary phishing simulations. The use of the company's own email for simulations presented a significant vulnerability, leaving the organization exposed to potential phishing threats.

The PhishRod Solution: A Holistic Defense Mechanism

In today's ever-evolving cyber threat landscape, the need for a holistic anti-phishing solution is imperative that goes beyond conventional measures. Recognizing the need for a robust anti-phishing strategy, the company partnered with PhishRod to implement a comprehensive solution. PhishRod introduced the Awareness Manager, Compliance Manager, and Phishing Simulator to address the identified challenges.



Phishing Simulator:

Replacing the outdated practice of using the company's own email for simulations, PhishRod's Phishing Simulator emerged as a game-changer. It offered realistic and targeted simulations, allowing the organization to assess

employee responses accurately and identify potential vulnerabilities.

Awareness Manager:

Utilizing its rich content library with 500+ artifacts, including SCORM compliant training modules, animated microlearning videos, posters, and emailers etc., PhishRod provided the organization with a centralized platform to educate and train employees on cybersecurity best practices. The interactive and engaging content helped

Compliance Manager:

The introduction of the Compliance Manager filled a crucial void in the provider's security infrastructure. This tool enabled the organization to streamline and manage compliance processes effectively, ensuring adherence to industry standards and regulations.

The Outcome



The implementation of PhishRod's holistic anti-phishing solution yielded significant positive outcomes for the company:

Enhanced Employee Awareness:

The Awareness Manager contributed to a heightened sense of cyber awareness among employees, empowering them to recognize and thwart phishing attempts. The phishing index at the beginning was at ___% which after ___ months decreased to ___% indicating a decline in vulnerable end user behavior and increased end user awareness.

Regulatory Compliance:

The Compliance Manager facilitated seamless compliance

management, ensuring the provider met regulatory requirements and industry standards, thereby reducing legal and reputational risks.