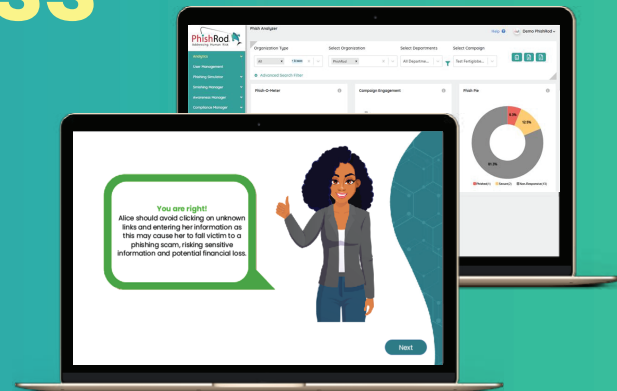


Security Awareness as a Service

Develop, Automate and Execute
High Impact Awareness Program
With Minimum Resources



Despite having the best technology in place, every day we hear incidents related to brand reputation or financial loss through a ransomware, identity theft, social engineering or a phishing scam.

While organizations invest in technology to strengthen the defense, the hackers are now targeting the weakest link in the organization. i.e. The Humans.

Current Challenges

Building an impactful security awareness program is a time taking process. It requires significant human resources and time to bring about a cultural change with respect to cyber security.

The below are some of the challenges related to security awareness program development in the current scenario:

- ▶ Lack of Resources for automation & development of the awareness program
- ▶ High dependency on the tool for program automation
- ▶ Starting the awareness program without knowing the baseline
- ▶ Unable to benchmark the awareness program against any standard or best practice
- ▶ Lack of analytics & KPIs to measure the effectiveness of the program
- ▶ Unable to justify the ROI of the existing security awareness solution

PhishRod: Awareness as a Service

Awareness as a Service is designed for organizations who intend to develop high impact security awareness program but have limited resources in this area.

Our Managed Services team takes complete ownership of the security awareness program from development to execution while prioritizing client's input at all times.

The following are the services offered as a part of Awareness as a Service:

- **Gap Analysis Against the Current and Optimal Required State of Cybersecurity Awareness**
- **Cyber Skills Assessment via Survey**
- **Cyber Skills Assessment via Gamification**
- **Development of Cyber Security Awareness Framework**
- **Automation of the Security Awareness Program**
- **Phishing Simulation as a Service**
- **Policy Compliance as a Service**
- **Customized Security Awareness Content Development**
- **Security Awareness Workshops**
- **Security Awareness Day**

Methodology

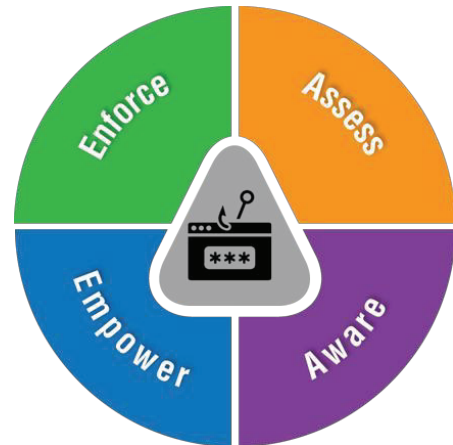
PhishRod has developed a comprehensive engagement methodology for Awareness as a Service. Our methodology is based on Asses-Aware-Empower-Enforce strategy.

Assess

During the Assess phase, our consultants review the current practices for security awareness and benchmark the existing program against the optimal cybersecurity awareness levels. The team conducts baseline assessment by sending simulated phishing campaigns to the end users. We also engage with end users to gauge their understanding and awareness level on current cyber security threats using the PhishRod Cyber Skills Survey Manager or in a more gamified way using CyberStrike. All activities will be conducted by PhishRod Managed Services team after approval from the client.

Aware

During this phase, the managed service team automates the security awareness framework. Using the PhishRod Security Awareness Manager, the team schedules all the awareness activities such as SCORM Compliant Training modules, posters, banners etc., and provides reports to the client.



Empower

In this phase, our team works with the Cyber Security teams to provide the “Intelligent Reporter Plug-In” to be installed on end user machines. Using the reporter plug-in, the end users can report suspicious emails that bypassed the email gateway. The reported emails can be analyzed, quarantined and deleted from all end user mailboxes using PhishScout, our automated phishing incident response platform with 90+ built-in threat feeds.

Enforce

During the enforce phase, our managed service team works with IT Security teams to automate the compliance of all corporate IT / IT Security policies.

Key Performance Indicators

PhishRod comes with more than 40+ different Key Performance Indicators related to Phishing Readiness, Security Awareness & Policy Compliance. The reports related to these indicators and other reports are provided to the client teams on regular intervals.

Phishing Readiness

- ▶ Organizational Phishing Index
- ▶ Department Phishing Index
- ▶ Most vulnerable End users
- ▶ Location wise distribution
- ▶ IP wise distribution
- ▶ Repeat Phished Users
- ▶ End user Phishing Index

Security Awareness

- ▶ Organizational Awareness Index
- ▶ Departmental Awareness Index
- ▶ Most Aware End Users
- ▶ Module Completion Status
- ▶ Average time spend on a training
- ▶ End user awareness index
- ▶ location wise distribution

Policy Compliance

- ▶ Organizational Policy Compliance Index
- ▶ Departmental Compliance Index
- ▶ End user Compliance Index
- ▶ Top compliant end users